

# PowerPROview

# Power Analyzer II

## Software Users Guide

26 January, 2008

# TABLE OF CONTENTS

Introduction.....	1
Toolbars.....	1
Power Analyzer II Toolbar .....	1
PA II Data Streaming .....	1
Zero AmpHrs & WattHrs Values.....	1
Recording PA II Data .....	2
PA II Configuration .....	2
PA II Configuration Editor.....	2
PA II Configuration General Settings .....	3
PA II Configuration Startup Screens .....	3
PA II Configuration Data Screens .....	4

# PowerPROview

## Power Analyzer II Software Users Guide

### Introduction

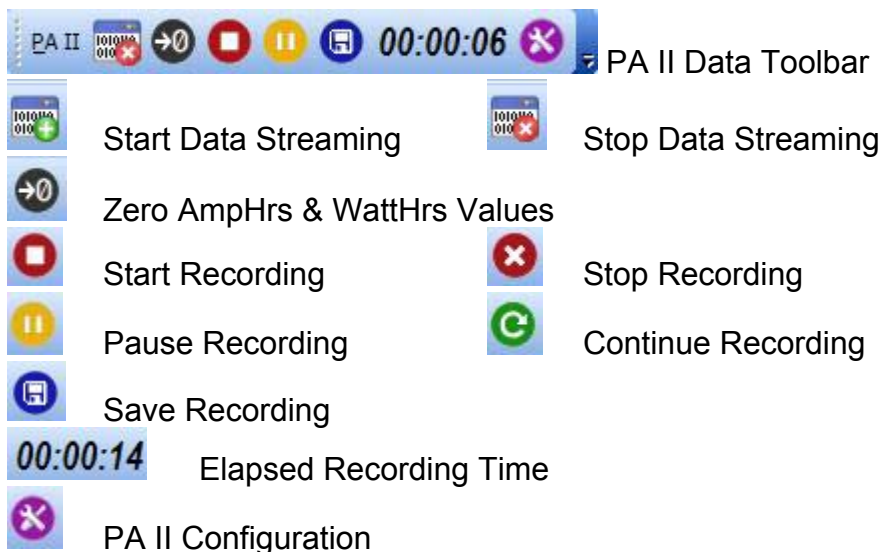
This manual deals with a Power Analyzer II connected to the PowerPROview software. For information on operating the PowerPROview software see the PowerPROview Software Users Guide.

### Toolbars

The toolbars and menu options for the Power Analyzer II will not appear until PowerPROview connects to a PA II device. When disconnected the toolbars and menu options will disappear.

### Power Analyzer II Toolbar

The PA II Toolbar gives you control over data streaming, recording, configuration, and other misc. functions of the II.



### PA II Data Streaming

Data will only be displayed in the data objects in the data views when data streaming is on. While data streaming is on the PA II sends data to the computer. If data streaming is off then data is not transmitted from the PA II to the computer.

### Zero AmpHrs & WattHrs Values

This function zeros the AmpHrs and WattHrs accumulators. This function can be automatically executed when recording starts if the system option "Auto Clear" is enable.

# PowerPROview

## Power Analyzer II Software Users Guide

### Recording PA II Data

You need to record data to be able to use it on a graph. The graph object on a data view is a special object that only displays recorded data or saved data. It will display the data as it is recorded or you can load and display previously recorded data for comparisons. Once you have recorded data, save it to disk. Once the data has been saved to disk it can then be loaded into a graph for analysis and comparison at any time. During recording the elapsed time is displayed in the toolbar recording time indicator. You can pause and resume recording at any time. Pausing a recording does not remove any data previously recorded. Resuming recording will append new data to the previously record data.

### PA II Configuration

You can configure various parameters of the Power Analyzer II. Configurations can be saved, deleted, edited, read from or written to a Power Analyzer II. When you click on the Configuration toolbar item the Configuration editor will appear with the current configuration information read from the PA II. You can then modify and write the configuration back to the PA II, save that configuration to disk, or read a previously saved configuration from disk and then save it to the PA II. When you open the PA II configuration window it reads the current configuration from the PA II and displays those settings.

### PA II Configuration Editor

There are three groups of configuration settings for the PA II: General Settings, Startup Screens, and Data Screens.



New Configuration



Open Configuration File



Save Configuration



Read Configuration from PA II



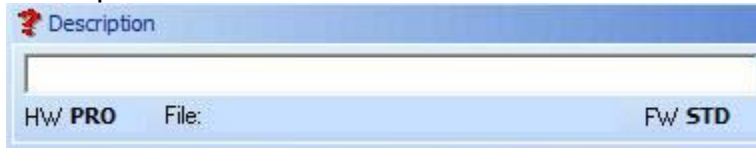
Write Configuration to PA II

# PowerPROview

## Power Analyzer II Software Users Guide

### PA II Configuration General Settings

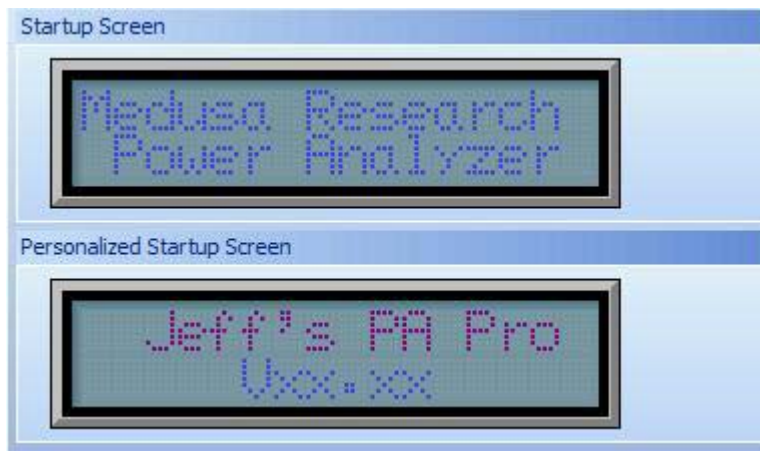
#### Description



The description field is where you can enter a short description for the configuration file. A description is only needed when saving a configuration to disk and is not written to the PA II.

### PA II Configuration Startup Screens

You can customize a message that is display when the Power analyzer PA II turns on. There is one line of 16 characters that can be customized with your name, favorite phrase or any message you want.



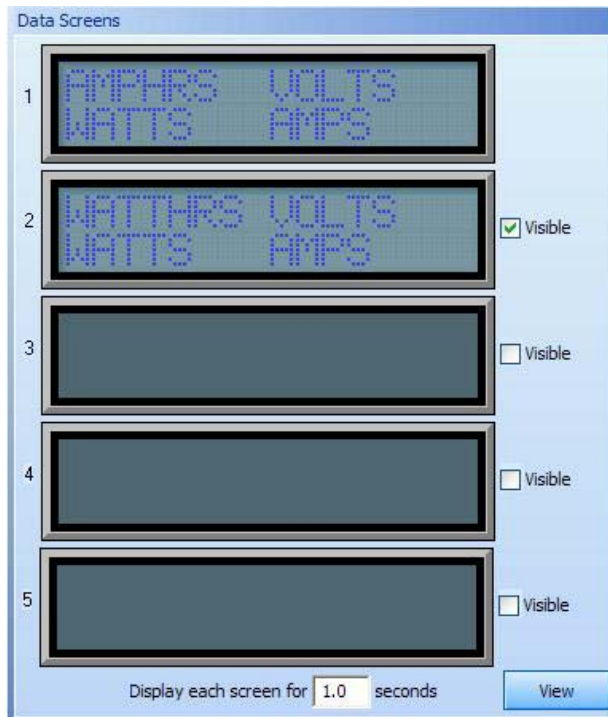
Double click on the first line and enter the text of your message and click ok. Right click to select options for: Center Justify, Left Justify, Right Justify, Upper Case, Lower Case, and Proper Case.

# PowerPROview

## Power Analyzer II Software Users Guide

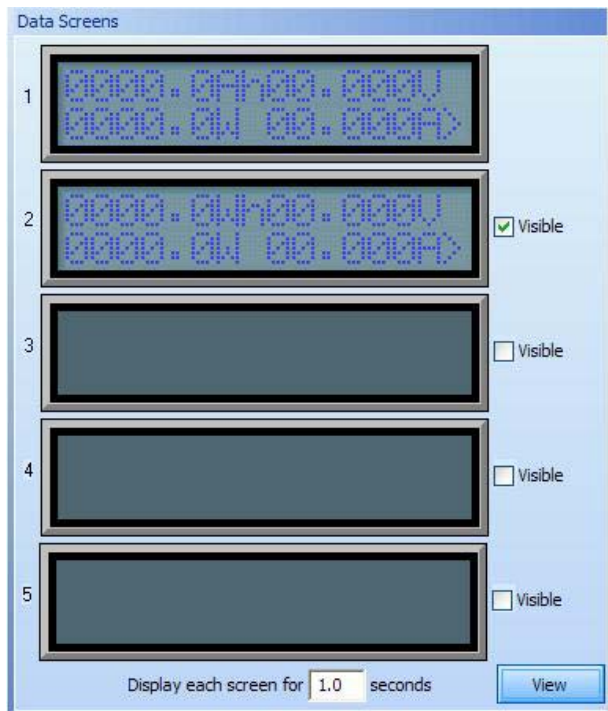
### PA II Configuration Data Screens

The data that is displayed on the PA II's LCD screen can be configured to show just the data that you want. There are five (5) available screens that can be configured to display any value in any one of four positions. The rate of change from one display to the next can also be set in 0.1 second increments. Used or unused screens can be disabled as needed.



Right click on one of the four positions in a display to select the data that is displayed in that position.

You can have the same data displayed in any number of positions and in any number of screens. This example displays the Amps and Volts in all screens in the same position on the right where the other positions rotate the other data values.



Click on the "View" button to switch between data name view and data format view.

The rate at which the screens change can be set in 0.1 increments.